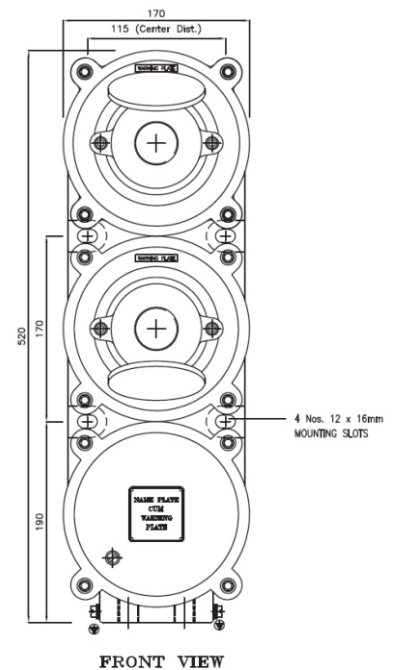




DATA SHEET FOR FLP SWITCH SOCKET SINGLE / TWIN WITH TERMINAL CHAMBER.

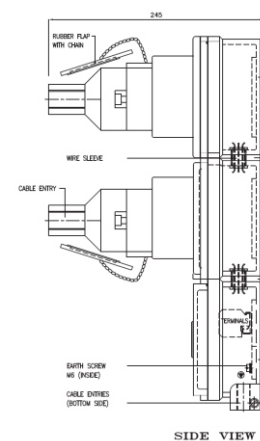
TECHNICAL DATA:

PRODUCT	: CAT.NO. SS/187
ENCLOSURE	: FLAME PROOF (Ex -d), Gas Group IIA , IIB As per IS/IEC 60079-1 : 2014
PROTECTION	: WEATHER PROOF IP – 66 AS PER IS/IEC 60529:2001 (Reaffirmed 2014)
AREA CLASS	: Ex db IIA,IIB T6 Gb (EX tb / tc IIIC T85 C Db/Dc (ZONE 1 & 2 & Zone 21 & 22)
CERTIFICATION	: CIMFR, BIS, PESO
TEMP CLASS	: T 6
MATERIAL	: DIE CAST ALUMINIUM ALLOY
FINISH	: EPOXY POWDER COATED SHADE AS PER IS : 5
EARTHING	: 1 No INTERNAL & 2 No's EXTERNAL
HARDWARE	: STAINLESS STEEL
GASKET	: 'O' RING ENDLESS GASKET NEOPRENE / SILICON
NAME PLATE	: SS NAME PLATE CUM WARNING PLATE
ENTRIES	: 2 NOS AT BOTTOM M25/ ¾" NPT/ 1" ET AND 2 NOS PLUG TOP M20/ ½" NPT/ ¾" ET/EQUIVALENT
SWITCH	: UP TO 32 AMP
SOCKET	: UP TO 32 AMP
PLUG TOP	: UP TO 32 AMP (4P+E)
FLAP	: RUBBER FLAP WILL BE PROVIDED FOR SOCKET
TERMINALS	: 10 NOS OF 2.5/10 SQ.MM CLIP ON TYPE TERMINAL
INTERLOCK	: INTERLOCKING ARRANGEMENT SUCH AS THE PLUG CAN NOT BE REMOVED WHEN THE SWITCH IS IN "ON" POSITION AND CAN BE WITHDRAW ONLY WHEN THE SWITCH IS IN "OFF" POSITION.



OPTIONS

SR.NO	PARTICULAR	OPTIONS
1.	MATERIAL OF CONSTRUCTION	STAINLESS STEEL
2.	GLAND & PLUG	BRASS / SS / ALUMINIUM
3.	COLOUR SHADE	631, 632, 355, 7031, 7032 etc.
4.	CANOPY	M.S POWDER COATED / FRP/ GI



NOTE:- SWITCH SOCKET CAN BE PROVIDED WITH ELCB / RCBO / MCB COMBINATION AS PER CUSTOMER REQUIREMENT